



[WWW.CSBABARUNCA.RO](http://WWW.CSBABARUNCA.RO)

# CONTENTS

**01-03**

WELCOME

**04**

BOM TEAM

**05**

COMPETITION SCHEDULE

**06**

EVENT DETAILS

**07**

HOW TO GET TO BRASOV

**08**

LOCATION & QUARANTINE

**09**

CATEGORIES & TIMING SYSTEM

**10**

GENERAL INFO

**11**

ACCOMODATION &  
TRANSPORT

**12**

FEES

**13**

AWARDS

**14-16**

INFO

SPRINT BRAȘOV

MIDDLE DISTANCE POIANA BRAȘOV

LONG DISTANCE LEMPEȘ

**17**

TOURIST ATTRACTIONS

**18**

TRAINING CAMP

**19-20**

OLD MAPS & PARTNERS

# WELCOME



*IULIU DOPOVECZ  
CS BABARUNCA PRESIDENT*



*MĂDĂLIN IACOB  
BOM EVENT DIRECTOR*



*IONUȚ ZINCĂ  
BOM RACE DIRECTOR*

We invite you to take part in the Brașov O-Meeting, a project of our club dedicated to bringing together orienteers from around the world. We are excited to welcome you to Brașov to share the passion for orienteering and to create connections between athletes from all corners of the globe.

Orienteering, although not very well known in Romania, is a sport with fantastic potential, both in terms of athletic performance and as a mass sport, practiced at any age. Through this competition, we are trying to bring orienteering into the heart of the city, into the activities of active people, and at the same time, to promote, through sport, the beautiful areas of Romania, such as the Brașov region.

The technical details of the terrain have been carefully studied to provide a challenging and interesting course for all participants. The maps used are completely new and updated, in accordance with the latest standards, ensuring an accurate and clear representation of the terrain. We are confident that these elements will contribute to an exciting and high-quality competition.

# ECHIPA BOM

<b>EVENT DIRECTOR</b>	MADALIN IACOB
<b>RACE DIRECTOR</b>	IONUȚ ZINCĂ
<b>IT MANAGER</b>	OLIMPIU ALEXA-POP
<b>EVENT SECRETARY</b>	DIANA DOPOVECZ
<b>REFEREE</b>	ANCA STUPU
<b>IOF ADVISOR</b>	TAMAȘ BOGYA
<b>VOLUNTEER COORDINATOR</b>	CORNEL SPIRIDON
<b>CONTROL MARKER TL</b>	FLORIN ZBARCEA
<b>TRAINING CAMP</b>	IULIU DOPOVECZ
<b>COMPETITION JURY</b>	NATALIA DECONESCU MIHNEA GRECU SIMION SUCIU

## COMPETITION RULES

The event will follow:  
IOF Competition Rules for Foot Orienteering.  
For WRE (World Ranking Event) – the Rules for the World Ranking Event in Foot Orienteering.

## CONTACT



[CSBABARUNCA.RO](http://CSBABARUNCA.RO)



[BRASOVOMEETING@CSBABARUNCA.RO](mailto:BRASOVOMEETING@CSBABARUNCA.RO)



**FOLLOW US**

# COMPETITION SCHEDULE

18 OCTOBER 2024

EVENT OFFICE	10:00 – 15:00	LIC. A. MUREȘANU
BOM SPRINT*	START 16:00	BRAȘOV
CN MEDAL CEREMONY	19:00	COMPETITION AREA

19 OCTOBER 2024

EVENT OFFICE	08:00 – 09:30	POIANA BRAȘOV
BOM MIDDLE	START 10:00	POIANA BRAȘOV
WRE MEDAL CEREMONY	MOVED TO SUNDAY DUE TO REASONS LISTED ON PAGE 15	

20 OCTOBER 2024

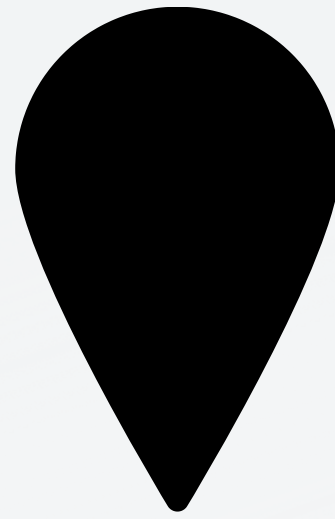
EVENT OFFICE	08:00 – 09:30	LEMPEȘ
BOM LONG	START 10:00	LEMPEȘ
BOM MEDAL CEREMONY	13:30	COMPETITION AREA

# COMPETITION DETAILS

The Braşov O-Meeting, now in its second edition, is a significant event in Romania's orienteering calendar. This year, it also serves as the final stage of the National Sprint Championship, organized by the Romanian Orienteering Federation, attracting the best competitors from across the country.

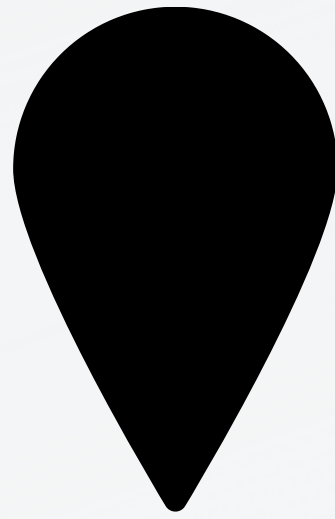
The competition includes three stages. The first two stages are part of the **World Ranking Event (WRE)**, featuring a Sprint race in the historic center of Braşov and a Middle Distance race in Poiana Braşov. The final stage is a Long Distance Pursuit race, which will take place in Lempes, adding an extra layer of strategy and endurance to the competition.

# HOW DO I GET TO BRAȘOV?



## BY CAR

The easiest way to travel to Brașov is by car from any point in the country.



## BUCUREȘTI HENRI COANDĂ

The distance between Henri Coandă Airport and Brașov is approximately 160 kilometers. There are several options for getting from the airport to Brașov: by car, by train, or via airport transfer.



## BRAȘOV GHIMBAV

Brașov-Ghimnav International Airport (AIBG) is located approximately 12 kilometers from the center of Brașov. You can choose from: taxi, Uber/Bolt, or private transfer.



## PRIVATE TRANSFER FOR GROUPS

Recommended: MarkSen Tour +40 721 439 439.

# LOCATIONS AND RESTRICTED AREAS

## VALIDATION & COMPETITION KIT

At the competition center, participants in the official categories will be able to pick up their race kit (including race numbers). Registration validation for these categories is done by paying the participation fee by the indicated date.

For this event, we only accept registrations for the Open, Open Children, and Family categories.

The center for validation and kit collection will be open on Friday, October 18th, from 10:00 AM to 3:00 PM at Andrei Mureșanu High School.

During the competition, validation will be open daily from 8:00 AM to 9:30 AM at the competition center in each location. The event's secretariat will respond to emails within 24 hours.

Additionally, event t-shirts will be available for purchase. The price is 100 lei.



QUARANTINE CLOSES AT 3:30 PM ON 18.10.2024.

Entry into the restricted area is prohibited for those participating in the BOM competition. Athletes, officials, and teams who violate this restriction will be disqualified.



# CATEGORIES AND TIMING SYSTEM

M10, M12, M14, M16, M18, M20, M21E, M21A, M35, M40, M45, M50, M55, M60, M65, M70, M75, M80+

W10, W12, W14, W16, W18, W20, W21E, W21A, W35, W40, W45, W50, W55, W60, W65, W70, W75, W80+

OPEN (a category dedicated to adult beginners)

OPEN CHILDREN (a category dedicated to beginner children up to 16 years old)

FAMILY

Competitors in the M18 and M35 categories who wish to compete in the Sprint in the M21E category and in other events in their respective categories can inform us via email, as the registration system does not allow entries in two different categories.



The electronic timing system Sportident will be used. Competitors with a standard Sportident card will record in the usual manner, while SIAC users will be able to use the contactless system.

**Sportident Card**  
SI cards available for rent are provided at no additional cost for participants who do not have their own chip. The fee for a lost Sportident card is €75.

# GENERAL INFORMATION

## APPEALS

Any protest must be submitted in writing and handed in at the finish arena as soon as possible. The protest will be reviewed by the organizers, and the claimant will be informed of the decision immediately. Protests related to results must be submitted no later than 15 minutes after the provisional results have been published and announced by the speaker.

## MAPS AND CONTROL DESCRIPTIONS

All maps are prepared according to IOF standards. All maps are printed on water-resistant paper. No additional plastic bags will be provided. The control descriptions conform to IOF standards. Control descriptions will be available at the start corridors.

## START

At the start corridors, SI cards will be checked at -3 (three minutes before the start time). The control descriptions will be available at -2.

In all official categories, competitors start without a start station. It is the competitors' responsibility to start on time. For the Open, Open Children, and Family categories, there will be a separate corridor with a start station.

## LATE START

Runners who miss their start time due to their own fault will be allowed to start, but their competition time will be calculated from their original start time. Runners who miss their start time due to an organizer's error will be given a new start time. It will not be possible to change the start time with a vacant minute.

## FINISH

The marked corridor from the last control point to the finish line must be followed. After validation at the last control point on the finish line, the time is stopped. Competitors scan their SI card, receive a slip with intermediate times, and can refresh themselves. Toilets, food, first aid, and shops are available in all competition areas.

Athletes who need to withdraw from a race must report this at the finish and scan their SI card.

## TRAINING CAMP

There is an option to participate in a training camp. Details are available at [csbabarunca.ro](http://csbabarunca.ro).

# ACCOMODATION & TRANSPORT

## ***Pensiunea Nueva Park – Braşov***

*Pensiunea Nueva Park offers 12 double rooms, either with a double bed or two single beds. All rooms are equipped with a private bathroom and Wi-Fi. Price for BVOM – 220 lei/night Reservations:*

*0722/764.641 Website  
<https://www.nuevapark.ro/>*

Other:

**Cabana Postavarul**

**Casa Vlasin**

**Piroska Panzio**

**Casa Ezio**



## **OCTOBER 18 - SCHEII BRAŞOVULUI**

Competition Center – Colegiul Național “A. Mureşanu” – Str. Bisericii Sf Nicolae nr. 1. Parking in the immediate area of the competition is very difficult. We recommend using the Public (multistorey) Parking with Payment at Regina Maria. <https://maps.app.goo.gl/7B9Y62pWHgr9ojdA6>

## **OCTOBER 19 - POIANA BRAŞOV**

Competition Center – Stâna Turistică Sergiana area. Access is available by personal car or by bus 20, departing from Livada Poştei.

## **OCTOBER 20 - YAZ - HĂRMAN**

Competition Center – Yaz Event Center  
[www.yaz.ro](http://www.yaz.ro)  
Access by personal car.

# FEES

MW > 18 + OPEN (+15), FAMILY

50 euro all stages – 17 euro / stage

< MW 16 + OPEN CHILDREN

35 euro all stages, 12 euro / stage

For participants from the Southeast European Orienteering Association (SEEOA) countries, including Bosnia and Herzegovina, Bulgaria, Croatia, Cyprus, Greece, Italy, Moldova, Montenegro, North Macedonia, Romania, Serbia, Slovenia, and Turkey, the competition fees are as follows:

MW > 18 and OPEN (+15, FAMILY):

180 lei for all stages, 60 lei per individual stage

For categories MW < 16 and OPEN CHILDREN:

135 lei for all stages, 45 lei per individual stage

Participants are encouraged to consult the competition website for additional details and possible fee updates.

## Note

Payment at the competition center is only accepted for the Open, Open Children, and Family categories, which are the only categories still open for registration. Unpaid registrations by October 14 will be invalidated. The final day for registration is October 11, 2024.



## Payment of Fees

Registrations are only valid once the fees have been received in our bank account. Payment updates are made once a week, on Tuesdays. Please indicate the name and category on the transfer.

## BANK DETAILS

IBAN: RO39 RNCB 0583 1383 3155 0006

SWIFT: RNCBROBU

BANK: Banca Comerciala Romana

ACCOUNT HOLDER: CLUBUL SPORTIV BABARUNCA

ADDRESS: Str. N.Colceag 8, Săcele 505600 Braşov

## REGISTRATIONS FOR OPEN / OPEN CHILDREN / FAMILY

For the Open, Open Children, and Family categories, registrations should be made using the form on the competition page:

<https://csbabarunca.ro/bvom-3/>

Payment should be made in the same way as for other categories. Additionally, registration and payment are also possible on the day of the competition for these categories.

# AWARDS

The WRE categories (M/F21 Elite) will be awarded after the competition on both days, with prizes given to the top 6 positions.

The Sprint stage and the Middle Distance (MD) stage contribute to determining the start order for the final Pursuit stage. The winners of all categories in the final Pursuit stage will be awarded the Winner's T-shirt.



## AWARD CEREMONY SCHEDULE

Friday, 18.10, 7:00 PM - WRE Awards Ceremony / FRO Sprint Awards Ceremony  
Sunday, 20.10, 1:30 PM - WRE Awards Ceremony / BvOM Awards Ceremony

The Sprint stage is also the final stage of the National Urban Sprint Championship.

The award ceremony for the National Sprint Championship will be organized by the Romanian Orienteering Federation (FRO).

The awards for all stages will be presented in the Finish area.



# INFORMATION ABOUT THE STAGES

## SPRINT WRE

Competition Center: "A. Mureșanu" National College

Address: Str. Bisericii Sf. Nicolae 1, Brașov

Coordinates: 45.63634, 25.58265.

Map – new, 1:4000, cartographer: Ionuț Zincă

Course planners: Ioan Iacob and Lucas Novak

Quarantine Area: School yard / Restrooms: inside the school

Altitude: The area is located at 538 meters above sea level.

Terrain: Urban environment in a hilly and flat area.

Vegetation: Mainly urban, with buildings, stairs, and a few parks.

Runability and visibility: Urban type.

Paths and roads: Predominantly residential area, with many narrow streets featuring cobblestone and asphalt alleys, and parked cars.



## TECHNICAL DETAILS SPRINT

Course	Category	Lenght	Climb	Number of controls
A	M21E, M16, M18, M35	3.40 km	100 m	19
B	F21E, F16, F18, F35, M21A, M45	2.98 km	90 m	13
C	M12, M14, F21A	2.05 km	50 m	12
D	F12, F14, F45, M55	1.76 km	40 m	9
E	F55, M65	1.42 km	0	8
Open	OP, F65, M75, M85	1.89 km	45 m	11
Open Children	OP C, F75, F 85	1.30 km	0	9
Family	FAMILY	1.49 km	0	9

**PARKING -> ARRIVAL: 750M**

**PARKING -> QUARANTINE: 1.9KM**

**QUARANTINE -> START: 300M**

**QUARANTINE CLOSSES AT 3:30 PM**

**FINISH AREA: 45.63998, 25.59327**

!! There is a multi-level building on the course (see photo below). On the upper level, there are tennis/football courts, while the lower level has parking. Access to the upper level is prohibited and is marked on the map with the symbol 709 – prohibited area to cross.



# INFORMATION ABOUT THE STAGES

## MIDDLE DISTANCE WRE

Competition Center: *Stâna Turistică Restaurant Area*

*Sergiana, Poiana Braşov*

Coordinates: *45.609451, 25.53645*

*Parking and restrooms: Available in the Competition Center area*

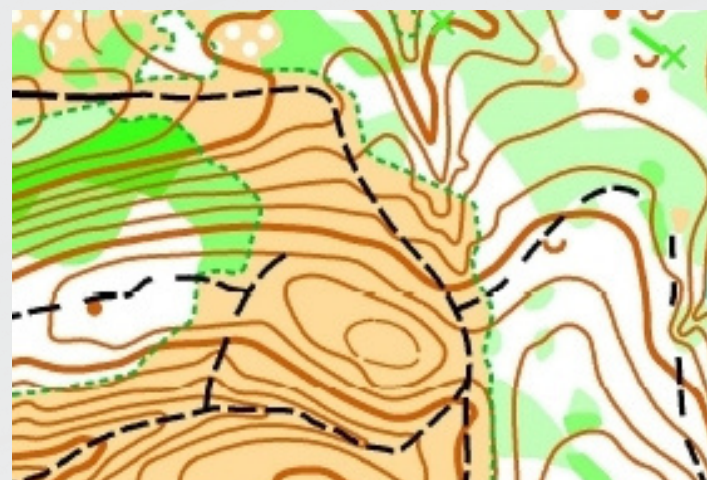
Map: *Re-mapped in 2024, 1:10,000*

Cartographer and Course Planner: *Ionuţ Zincă*

*Terrain: Mixed forest of coniferous and deciduous trees, with a rich network of paths and a large area covered by clearings.*

*Runability and Visibility: Mostly good*

*Paths and Roads: Several roads and forest paths cross the terrain.*



## TECHNICAL DETAILS MIDDLE DISTANCE

Traseu	Categorii	Lungime	Dif. Nivel	Nr. Posturi
M21 E	M21	4,68	305	23
F21 E	F21 /M20/M35	3,87	220	19
A	M18/M40/M45/F20/F35	3,56	195	16
B	M16/M50/M55/F18/F40/F45/Open	3,29	180	16
C	M14/M60/M65/ F16/F50/F55	3,05	160	15
D	M12/M70/M75/F14/F60/F65/Family	2,72	125	13
E	F12/F70/F75/ Open Children	3,00	115	14
F	M10/F10	1,48	35	9

**ARRIVAL/PARKING -> START: 1000M/OM+  
START -> TRIANGLE MAP: 100M/OM+**

**ATTENTION! On the day of the competition, traffic on the Braşov - Poiana Braşov road will be restricted between 2:00 PM and 6:00 PM due to a cycling competition. For this reason, the WRE awards ceremony scheduled for 1:30 PM will be postponed to the following day.**

*The Stâna Turistică Sergiana restaurant offers all participating competitors a discount voucher on Saturday and Sunday. The voucher is included in the race kit.*



# INFORMATION ABOUT THE STAGES

## LONG DISTANCE - PURSUIT

Competition Center: Yaz Event Center – Hărman

Coordinates: 45.71898, 25.66817

*Parking and restrooms: Available within the Yaz Center*

*Map: Re-mapped and expanded, 3/4 new map, 1:10,000*

*Cartographer and Course Planner: Ionuț Zincă*

*Terrain: Deciduous forest with a network of paths; alternating level areas with flat areas.*

*Runability and Visibility: Mostly good to perfect.*

*Paths and Roads: Several roads and forest paths cross the terrain.*



## TECHNICAL DETAILS LONG DISTANCE

Traseu	Categorii	Lungime	Dif. Nivel	Nr. Posturi
M21E	M21	9,39	455	24
F21E	F21 /M20/M35	7,45	345	21
A	M18/M40/M45/F20/F35	6,67	245	18
B	M16/M50/M55/F18/F40/F45/Open	5,84	205	16
C	M14/M60/M65/ F16/F50/F55	4,88	195	13
D	M12/M70/M75/F14/F60/F65/Family	3,53	145	11
E	F12/F70/F75/ Open Children	2,51	125	8
F	M10/F10	1,77	115	8

**ARRIVAL/PARKING -> START: 1200M/OM+**  
**START -> TRIANGLE MAP: 120M/OM+**

At the Sunday stage, you have the opportunity to enjoy a meal in the food-Yaz area, where you will find the following options:

9:00 AM – Coffee and juices

12:00 PM – 3:00 PM – Lunch (various food options, including vegetarian choices)

Traditional Romanian menu with Bertis sausages and Braşov Czell beer.





# TOURIST AND CULINARY ATTRACTIONS

## BRAȘOV - STAGE 1 SPRINT

### BLACK CHURCH

One of Brașov's main tourist attractions, the Black Church is one of the most representative Gothic architectural monuments in Romania, dating back to the 14th-15th centuries. With a length of over 89 meters, it is considered the largest Gothic construction in Southeast Europe.

Opening Hours:

Friday-Saturday: 10:00 AM - 6:40 PM

Sunday-Monday: 12:00 PM - 6:40 PM



### OMELETT

Omelett offers a culinary experience between the blue of the sky and the colors of the sunset. It is a prime example of excellence in relation to Brașov's heritage (Letter 9). Omelett is a breakfast spot, but not only that. It is a place where the architecture of old Brașov meets gastronomy, and we are very pleased to have it as a partner. Thus, each participant will receive a voucher in their kit for a unique experience at Omelett.



### TIPOGRAFIA

Tipografia - "coffee nook & cultural hub, located in the old center of the town, at the crossroad between Diaconu Coresi and Postăvarului streets, is a cozy place where you can spend the first half of the day socializing over breakfast and coffee, or you can bring your laptop for a quiet work session." (Tripadvisor).

Tipografia Tea & Coffee House is one of the BOM partners, and thus each participant will receive a special voucher in their race kit.



## POIANA BRAȘOV- STAGE 2 MD



The most important winter tourist resort in Romania is located at an altitude of 1,020 meters, at the foot of the Postăvarul Massif. It features 12 ski slopes of varying difficulty levels, as well as numerous mountain hiking trails and a special mountain track for MTB. In 1906, the first skiing competition took place in Poiana Brașov, and in 1951, it hosted the Winter Universiade. Today, it offers several hotels and guesthouses, tourist cabins, a church, an ice rink, a swimming pool, sports fields, facilities for artificial snow and night skiing, as well as ski lifts, chairlifts, and cable cars.

## HĂRMAN - STAGE 3 LD

### FORTIFIED CHURCH

*The fortified Evangelical Church was built in the 13th century on the foundations of an ancient Roman basilica dating back to the 12th century. The first documentary mention of the settlement dates back to March 21, 1240, 15 years after the expulsion of the Teutonic Knights from these territories.*

Visiting Hours:

Monday-Saturday: 9:00 AM - 6:00 PM

Sunday: 10:00 AM - 6:00 PM



# TRAINING CAMP

## 13 -17 OCTOMBRIE 2024

**TRAINING COST**  
15 lei/map/participant

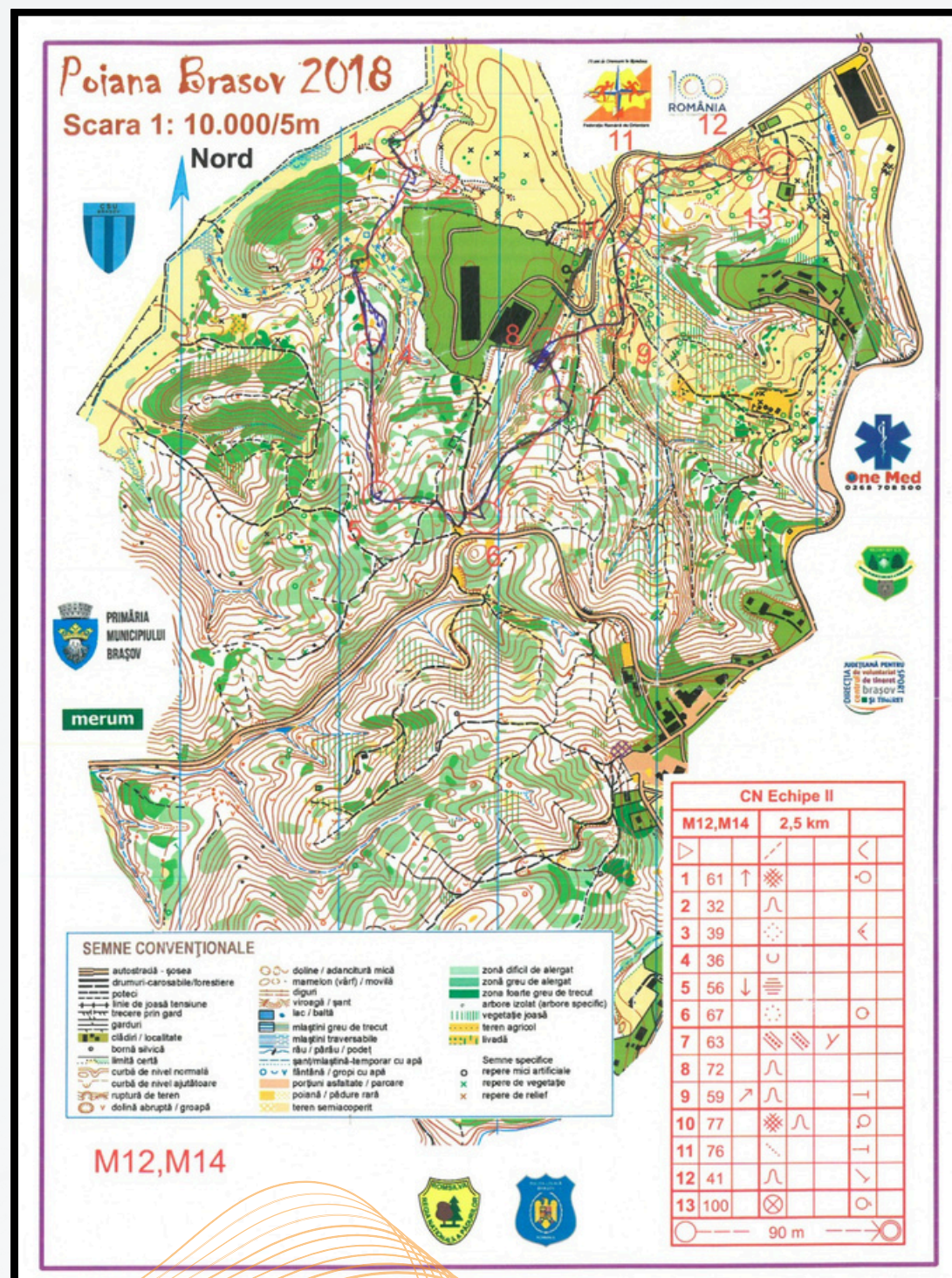
Maps created between 2021-  
2023 by Ionuț Zincă  
TC Director: Iuliu Dopovecz  
Course Planner: Ionuț Zincă



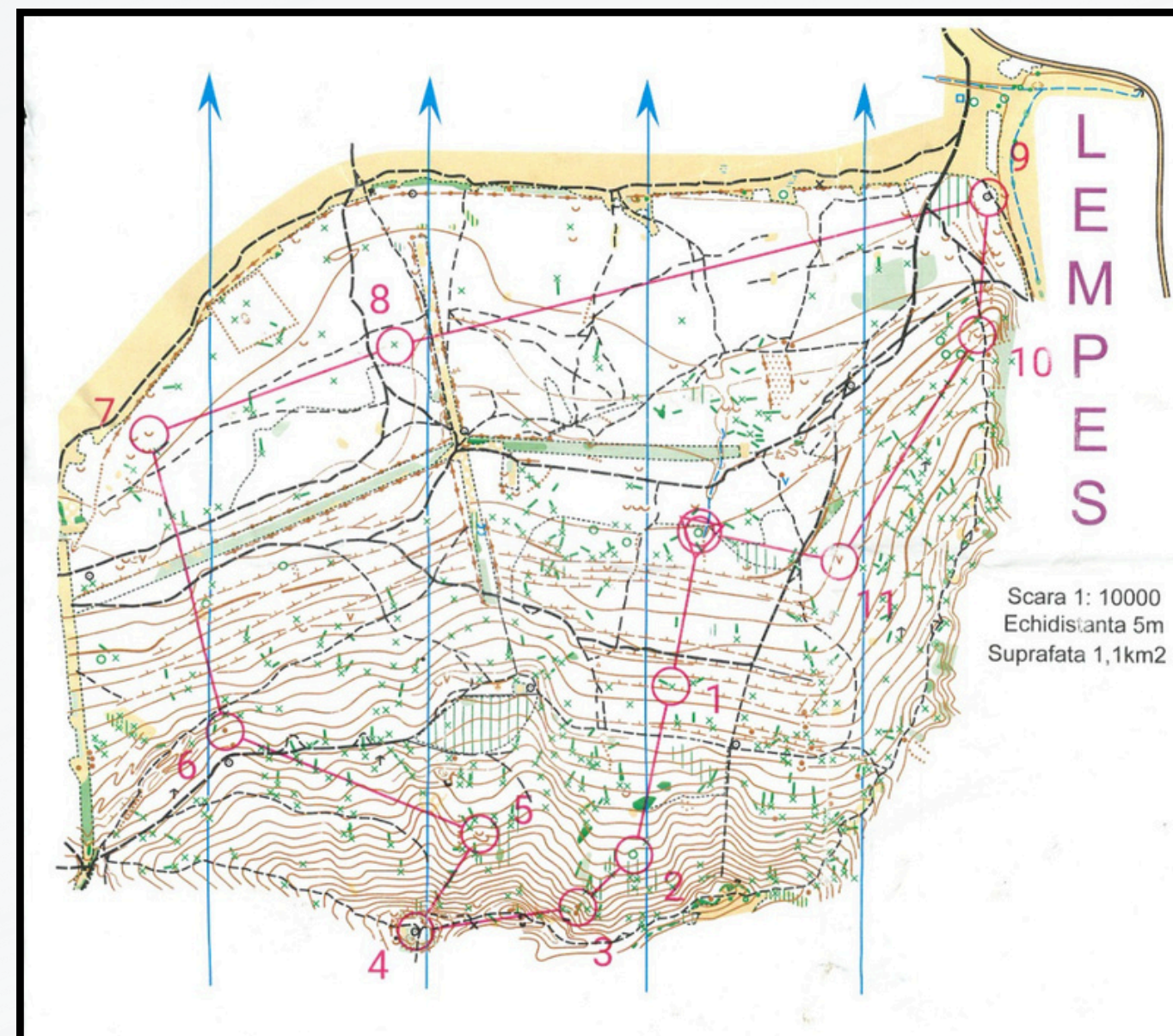
DATE	START HOUR	AREA	PARKING COORDINATES	MEETING / START
13.10.2024	16:00 - 18:00	VALUL TATAR - SACELE		<b>SĂCELE</b> <u>45.608938, 25.661403</u>
14.10.2024	TRAINING I: 10:00 - 12:00 TRAINING II: 14:00 - 16:00	TRAINING I: RECI (forest) TRAINING II: RECI (forest)	RECI <u>45.834909, 25.934188</u>	RECI 1. <u>45.825796, 25.929016</u> RECI 2. <u>45.834624, 25.936119</u>
15.10.2024	TRAINING I: 10:00 - 12:00 TRAINING II: 14:00 - 16:00	TRAINING I: CRISTIAN (forest) TRAINING II: (city) PARCUL TRANDAFIRILOR	CRISTIAN <u>45.628955, 25.509910</u>	CRISTIAN <u>45.624956, 25.504846</u> P. TRANDAFIRILOR <u>45.640403, 25.612440</u>
16.10.2024	TRAINING I: 10:00 - 12:00 TRAINING II: 14:00 - 16:00	TRAINING I: VULCAN (forest) TRAINING II: VULCAN (forest)	VULCAN 1 <u>45.610232, 25.408846</u> VULCAN 2 <u>45.615174, 25.410941</u>	VULCAN 1 <u>45.612258, 25.405262</u> VULCAN 2 <u>45.615162, 25.411794</u>
17.10.2024	10:00 - 12:00	CARTIERUL RĂCĂDAU BRAȘOV		<u>45.637928, 25.611813</u>

# OLD MAPS

## POIANA BRAȘOV



## LEMPEȘ



# PARTNERS

## INSTITUTIONAL PARTNERS



Federația Română  
de Orientare



PRIMĂRIA  
MUNICIPIULUI  
BRAȘOV



Consiliul Județean  
Brașov



Primăria Comunei Hărman

