

## BULLETIN 2

# **Brasov** **meeting**



**ORIENTEERING IN TRANSYLVANIA**

**10 - 12 OCTOBER 2025**

**\*PROJECT CO-FINANCED BY CONSILIUL JUDEȚEAN BRAȘOV**

# WELCOME



*IULIU DOPOVECZ  
CS BABARUNCA PRESIDENT*

We invite you to take part in the Braşov O-Meeting, a project of our club dedicated to bringing together orienteers from around the world. We are excited to welcome you to Braşov to share, for the third time, the passion for orienteering and to create connections between athletes from all corners of the globe.



*IONUŢ ZINCĂ  
TECHNICAL DIRECTOR*

The technical details of the terrain have been carefully studied to provide a challenging and interesting course for all participants. The maps used are completely new and updated, in accordance with the latest standards, ensuring an accurate and clear representation of the terrain. We are confident that these elements will contribute to an exciting and high-quality competition.



# TEAM

<b>EVENT DIRECTOR</b>	MADALIN IACOB
<b>TECHNICAL DIRECTOR</b>	IONUȚ ZINCĂ
<b>IT MANAGER</b>	OLIMPIU ALEXA-POP
<b>EVENT SECRETARY</b>	DIANA DOPOVECZ
<b>REFEREE</b>	ANCA STUPU
<b>IOF ADVISOR</b>	BOGYA TAMAS
<b>VOLUNTEER COORDINATOR</b>	CORNEL SPIRIDON
<b>CONTROL MARKER TL</b>	FLORIN ZBARCEA
<b>LOGISTIC DIRECTOR</b>	IULIU DOPOVECZ

## COMPETITION RULES

The event will follow:  
IOF Competition Rules for Foot Orienteering.  
For WRE (World Ranking Event) – the Rules for the World Ranking Event in Foot Orienteering.

## CONTACT



[CSBABARUNCA.RO](https://CSBABARUNCA.RO)



[BRASOVOMEETING@CSBABARUNCA.RO](mailto:BRASOVOMEETING@CSBABARUNCA.RO)

*FOLLOW US*



# COMPETITION SCHEDULE

10 OCTOBER 2025

PROLOGUE

START 10:00

VULCAN

BOM SPRINT

START 16:00

RÂȘNOV

WRE MEDAL  
CEREMONY

18:30

COMPETITION  
AREA

11 OCTOBER 2025

EVENT OFFICE

08:00 – 09:30

VĂLĂȘOAIA-  
SĂCELE

BOM MIDDLE

START 10:00

WRE MEDAL  
CEREMONY

13:00

COMPETITION  
AREA

12 OCTOBER 2025

EVENT OFFICE

08:00 – 09:30

RÂȘNOV

BOM LONG

START 10:00

RÂȘNOV

BOM MEDAL  
CEREMONY

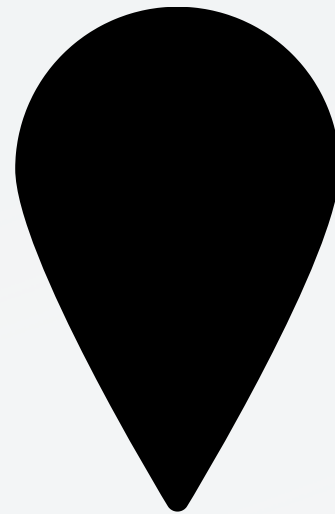
13:30

COMPETITION  
AREA

# COMPETITION DETAILS

The Braşov O-Meeting, now in its third edition, is a significant event in Romania's orienteering calendar. In this edition, the competition includes four stages (Prologue, Sprint, Middle & Long - Pursuit). Two stages are part of the **World Ranking Event (WRE)**, featuring a Sprint race in Râşnov city and a Middle Distance race in Săcele - Văalăşoaia. The first stage is a Middle Distance - Prologue in Vulcan and the final stage is a Long Distance - Pursuit race, in Râşnov, adding an extra layer of strategy and endurance to the competition.

# HOW DO I GET TO BRAȘOV?



## BY CAR

The easiest way to travel to Brașov is by car from any point in the country.



## BUCUREȘTI HENRI COANDĂ

The distance between Airport and Brașov is approx. 160 kilometers. There are several options for getting from the airport to Brașov: by car, by train, or via airport transfer. **Be your trip carefully. Due to traffic the trip can take up to 5 hours.**



## BRAȘOV GHIMBAV

Brașov-Ghimbav International Airport (AIBG) is located approximately 12 kilometers from the center of Brașov. You can choose from: taxi, Uber/Bolt, or private transfer.



## PRIVATE TRANSFER FOR GROUPS

Recommended: MarkSen Tour +40 721 439 439.

# CATEGORIES AND TIMING SYSTEM

M10, M12, M14, M16, M18, M20, M21E, M21A, M35, M40,  
M45, M50, M55, M60, M65, M70, M75, M80+  
W10, W12, W14, W16, W18, W20, W21E, W21A, W35, W40,  
W45, W50, W55, W60, W65, W70, W75, W80+  
OPEN (a category dedicated to adult beginners)  
OPEN CHILDREN (a category dedicated to beginner  
children up to 16 years old)  
FAMILY

Competitors in the M18 and M35 categories who wish to compete in the Sprint in the M21E category and in other events in their respective categories can inform us via email, as the registration system does not allow entries in two different categories.



The electronic timing system Sportident will be used. Competitors with a standard Sportident card will record in the usual manner, while SIAC users will be able to use the contactless system.

**Sportident Card**  
SI cards available for rent are provided at no additional cost for participants who do not have their own chip. The fee for a lost Sportident card is €80.



# FEES

**TILL 02.10.2025**

MW > 18 + OPEN (+15), FAMILY 30€ all stages (12€/ stage) + 12€ prologue\*

< MW 16 + OPEN CHILDREN 20€ all stages (7€ / stage) + 7€ prologue\*

\*For Prologue the payment is also possible at the Event Office

Participants are encouraged to consult the competition website for additional details and possible fee updates.

## **Payment of Fees**

Registrations are only valid once the fees have been received in our bank account. Payment updates are made once a week, on Tuesdays. Please indicate the name and category on the transfer.

## **Note**

Payment at the competition center is only accepted for the Open, Open Children, and Family categories, which are the only categories still open for registration. Unpaid registrations by October 5 will be invalidated. The final day for registration is October 2, 2025.

## **BANK DETAILS**

IBAN: RO39 RNCB 0583 1383 3155 0006

SWIFT: RNCBROBU

BANK: Banca Comerciala Romana

ACCOUNT HOLDER: CLUBUL SPORTIV BABARUNCA

ADDRESS: Str. N.Colceag 8, Săcele 505600 Braşov

## **REGISTRATIONS FOR OPEN / OPEN CHILDREN / FAMILY**

For the Open, Open Children, and Family categories, registrations should be made using the form on the competition page:  
<https://csbabarunca.ro/bvom-3/>

Payment should be made in the same way as for other categories. Additionally, registration and payment are also possible on the day of the competition for these categories.



# TOURIST AND CULINARY ATTRACTIONS

## BRAȘOV

### BLACK CHURCH

One of Brașov's main tourist attractions, the Black Church is one of the most representative Gothic architectural monuments in Romania, dating back to the 14th–15th centuries. With a length of over 89 meters, it is considered the largest Gothic construction in Southeast Europe.



### OMELETT

"OMELETT is about fresh ingredients, joy of cooking and bringing a ray of sunshine to anyone visiting". Breakfast & Brunch Restaurant From Early Breakfast to Lazy Lunch. Menu is refreshed seasonally, to make the most of the local ingredients available only for short periods of time.



### TIPOGRAFIA

Tipografia – "coffee nook & cultural hub, located in the old center of the town, at the crossroad between Diaconu Coresi and Postăvarului streets, is a cozy place where you can spend the first half of the day socializing over breakfast and coffee, or you can bring your laptop for a quiet work session." (Tripadvisor).

Tipografia Tea & Coffee House is one of the BOM partners, and thus each participant will receive a special voucher in their race kit.



## RÂȘNOV



Râșnov is a small city located at about 15 km southwest of the city of Brasov and about the same distance from Bran, on DN73, a road that links Wallachia and Transylvania. The most important Things to Do: The Fortress, Dino Park (the biggest dinosaur theme park in Eastern Europe, an unique and special project in Romania), Valea Cetății Cave (a small beautiful cave where you can spend 20–30 exciting minutes) and, about 15 km, Bran Castle (one of the most famous landmarks in Transylvania, and is known as the home of Count Dracula. The 14th-century hillside castle and fortress, however, actually houses a collection of furniture and artworks that once belonged to Marie, Romania's last queen.)

### THE FORTRESS

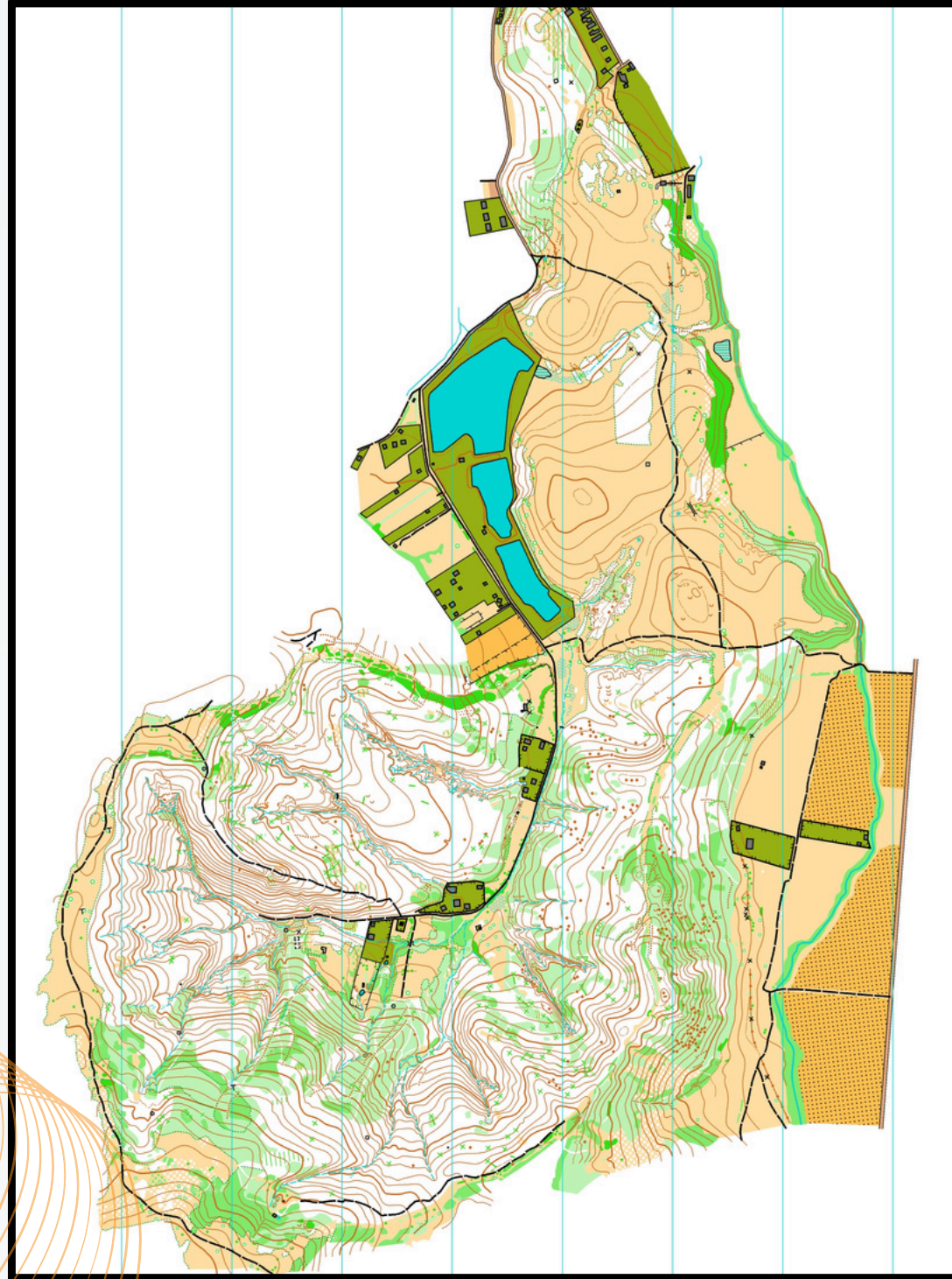
*The Râșnov Fortress was first built as a castle by the Teutonic Knights in the years 1211–1225. Râșnov was mentioned for the first time in 1331 as Rosnou and again in 1388 as villa Rosarum. While the village was razed many times in its history by Tatars, Turks and Wallachians the fortress was conquered only once, in 1612, by Gabriel Bathory.*





# OLD MAPS

## VULCAN MAPS



**THE REST OF THE TERRAINS ARE USED  
FOR THE FIRST TIME FOR  
ORIENTEERING AT THE TIME OF THE  
COMPETITION**

# PARTNERS

## INSTITUTIONAL PARTNERS

PROIECT COFINANTAT DE CONSILIUL JUDETEAN  
BRAȘOV



Consiliul Județean  
Brașov



Federația Română  
de Orientare



PRIMĂRIA ORAȘULUI  
RÂȘNOV



PRIMĂRIA  
MUNICIPIULUI SĂCELE



**AKRO**  
GRIJA PENTRU APĂ

**Livezile  
Dobrinoiu**  
FRUCTE SI SUCURI DIN FRUCTE

**SERIGRAFIE**  
BRASOV

**ZIZIN**  
APE MINERALE NATURALE

**Pizza**  
RESTAURANT - PIZZERIA  
PENSIUNE  
NUEVA PARK  
★★★

◉ M E L E T T

OPEN MON-FRI 7:30 AM, SAT-SUN 9 AM.  
**TIPOGRAFIA**  
TEA & COFFEE HOUSE  
BUN DE TIPAR  
RELAX BY DAY, WILD RIDE BY NIGHT